

Enterprise Cloud Manager

Network Management &
Application Platform



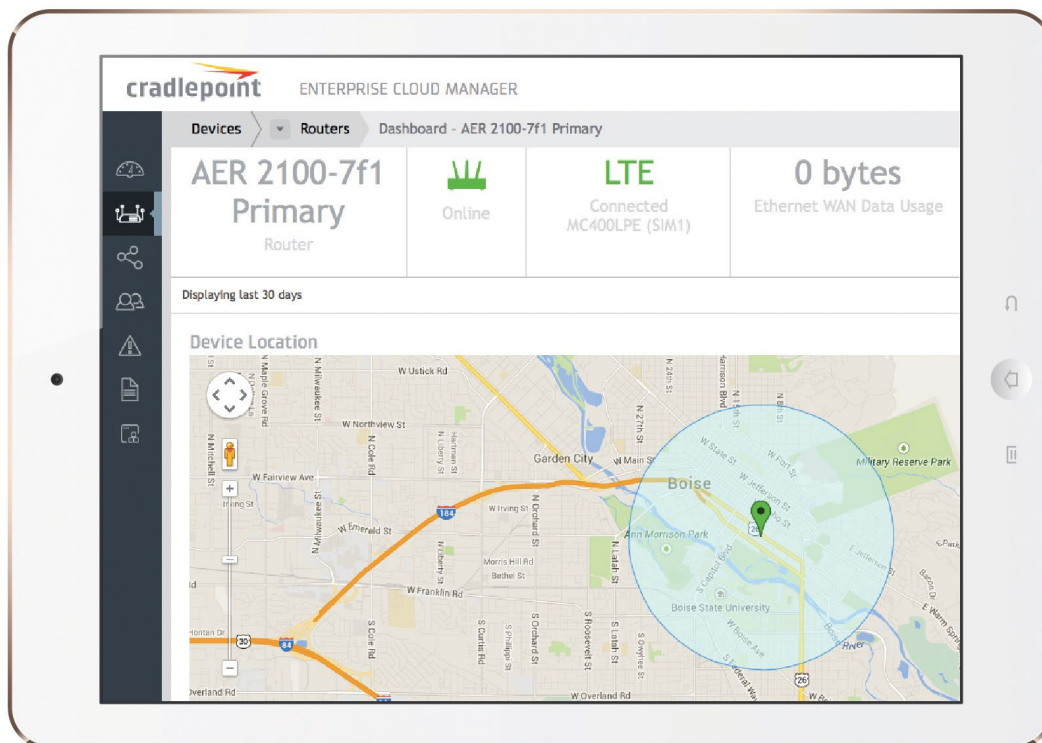
DEPLOY & MANAGE THE INTELLIGENT NETWORK

Rapidly deploy and dynamically manage networks at geographically distributed locations with Enterprise Cloud Manager, Cradlepoint's network management and application platform. Improve productivity, reduce costs, and enhance the intelligence of your network and business operations.

- + **Zero-touch Deployment:** Configure devices by groups or individually, and update firmware easily with a few clicks.
- + **Simplified Management:** Monitor device statuses in real-time and set proactive alerts for optimized 3G/4G data usage and network uptime.
- + **Instant Insights:** Always connected, real-time network analytics to manage data usage, performance, and costs.

KEY FEATURES

- + Tier 4 datacenter, SSAE Type II (SAS 70) compliance compliance
- + Centralized management
- + WAN access over 3G/4G and wired Ethernet connections
- + Configure groups and individual devices
- + Remotely update firmware
- + Manage user access
- + Create alerts (downtime, security, & data usage)
- + Group & device reporting
- + Secure device registration and authentication
- + Efficient, bi-directional management protocols
- + Open API



Location services and geo-fencing only available in Enterprise Cloud Manager PRIME



Branch Offices



Business Continuity



Interactive Kiosks



Digital Signage



WiFi



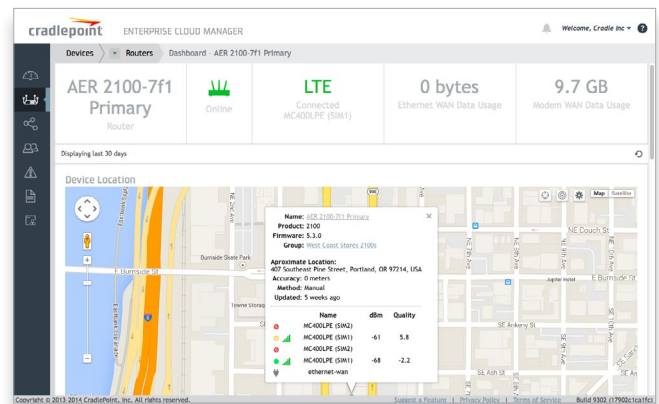
Transportation



INSTANT INSIGHTS & INTELLIGENT MANAGEMENT

Proactive alerts and reporting enable you to better manage devices across your organization.

- + Robust analytics to manage performance, data usage, and costs
- + Application aware policies for intelligent WAN selection and optimization
- + Manage networks intelligently with real-time QoE analytics
- + Set alerts for 3G/4G modem connectivity issues, data usage, failed login attempts, modem removal, unauthorized users or configuration changes

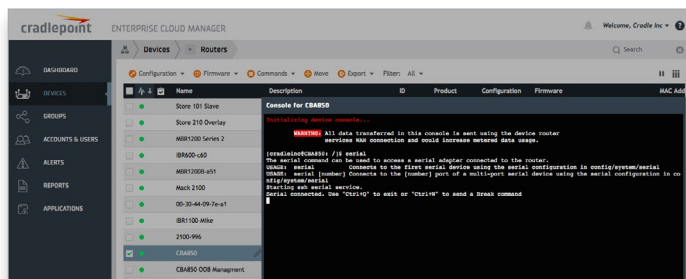


Location-based analytics



LOWER THE TOTAL COST OF OWNERSHIP

Protect mission-critical applications – improve network uptime and performance while reducing costs:



Cloud-based Out-of-Band Management (3rd party router CLI access)

- + Using cloud secure access, extend management capability to any primary router out-of-band without a static IP (ECM PRIME only)
- + Perform remote diagnostics – status reports and error logs
- + Troubleshoot without onsite IT support
- + Monitor 3G/4G data usage, avoid overages
- + Reduce truck rolls, saving time and money
- + Prevent poor customer experiences and lost revenue caused by Internet downtime



PROTECT YOUR NETWORK

- + Secure data transactions with advanced VPN options
- + Integrate Zscaler Internet Security to inspect and filter “direct to internet” traffic with near-zero latency
- + Unified Threat Management (IPS/IDS) security options
- + Enterprise class Tier 4 datacenter, SSAE Type II (SAS 70) compliance
- + Upgrade firmware remotely – ensure up-to-date security and PCI compliance

Status	SSID	Last Seen	Manufacturer	BSSID	Security	RSSI	Channel	Seen
✖	ASFTOPEN	5 minutes ago	Aruba Networks	00:08:86:03:7F:F1	none	-88	44	AER
✖	A-ASFTWLAN	5 minutes ago	Aruba Networks	00:08:86:03:7F:F0	wpa2	-88	44	AER
✖	West 2100	5 minutes ago	CradlePoint (Locally	02:30:64:17:50:45	wpa2tkip/psk/wn	-41	6	AER
✖	A-ASFTWLAN	5 minutes ago	Aruba Networks	00:08:86:03:6A:21	wpa2	-76	1	AER
✖	A-ASFTWLAN	5 minutes ago	Aruba Networks	00:08:86:03:67:50	wpa2/act	-85	48	AER
✖	ASFTOPEN	5 minutes ago	Aruba Networks	00:08:86:03:67:51	none	-86	48	AER
✖	Bella	5 minutes ago	Ayecom Co	00:1A:2B:AC:06:E1	wpa2psk	-84	11	AER
✖	ASFTWLAN	5 minutes ago	Aruba Networks	00:08:86:03:81:C2	wpa2psk	-82	6	AER
✖	CP-Guest	5 minutes ago	Wibru	00:11:74:40:2A:60	wpa2psk	-78	6	AER
✖	LSMJ Law	5 minutes ago	Cisco-Linksys	00:25:9C:3F:3E:79	wpa2tkip/psk/psaes	-71	11	AER
✖	A-ASFTWLAN	5 minutes ago	Aruba Networks	00:08:86:03:6A:00	wpa2	-88	36	AER
✖	ds-wrt	5 minutes ago	Ubiquiti Networks	24:4A:3C:81:79:E7	none	-59	11	AER
✖	ASFTWLAN	5 minutes ago	Aruba Networks	00:08:86:03:67:40	wpa2psk	-72	1	AER
✖	A-ASFTWLAN	5 minutes ago	Aruba Networks	00:08:86:03:6A:30	wpa2	-86	149	AER
✖	ASFTOPEN	5 minutes ago	Aruba Networks	00:08:86:03:6A:31	none	-87	149	AER

Rogue AP detection

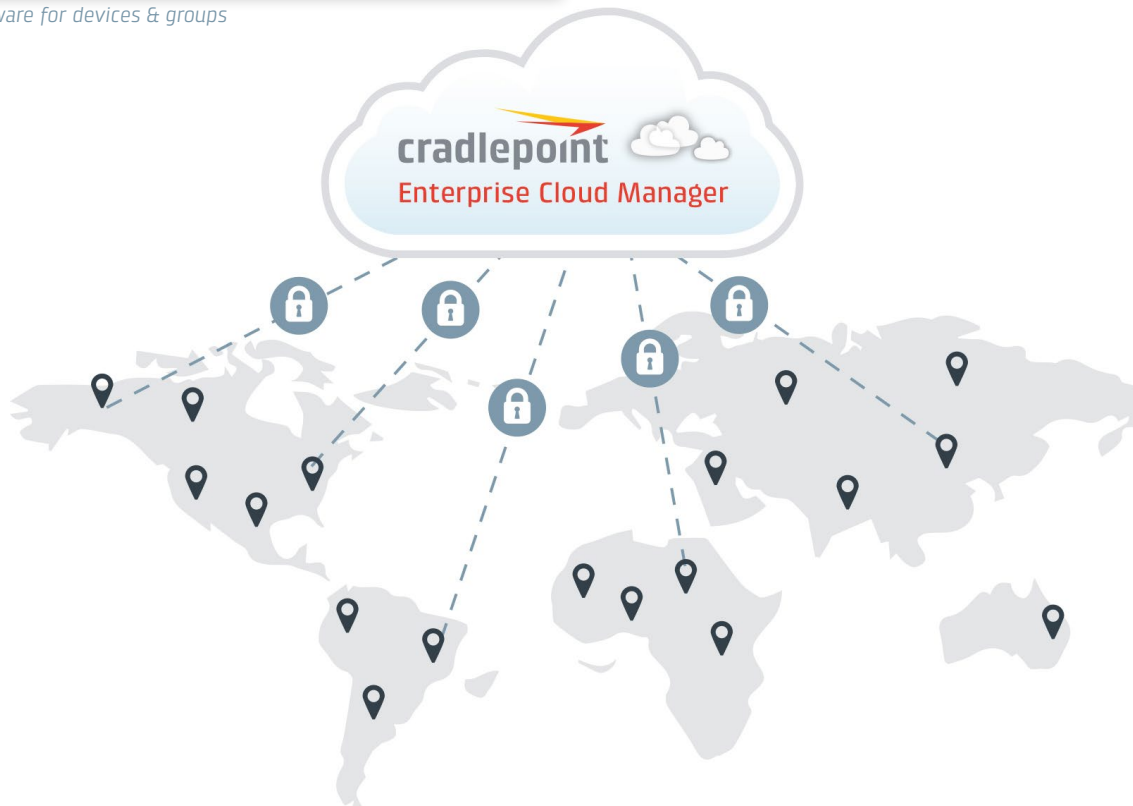


SCALE FASTER

Name	Outlier	Firmware	Synched	Suspended	PW Pending	PW Errors	Account	Router
081000 Topik Deploy...	1 of 1	5.2.4 (2014-10-17)	2 of 1	0 of 1	0 of 1	0 of 1	Cradle Inc.	1
West Coast Stores 2100s	1 of 1	5.2.3 (2014-09-16)	3 of 1	0 of 1	0 of 1	0 of 1	Cradle Inc.	1
M8R1200 Series 2	1 of 1	5.2.0 (2014-06-23)	3 of 1	0 of 1	0 of 1	0 of 1	Cradle Inc.	1
081 1400	1 of 1	5.1.2 (2014-05-09)	3 of 1	0 of 1	0 of 1	0 of 1	Cradle Inc.	1
2100 S.3.0	1 of 1	5.1.1 (2014-04-10)	3 of 1	0 of 1	0 of 1	0 of 1	Cradle Inc.	1
Test	1 of 1	5.0.2 (2014-01-09)	3 of 1	0 of 1	0 of 1	0 of 1	Cradle Inc.	1
M8R1400 VRSP Master (West)	0 of 1	5.0.1 (2013-12-06)	1 of 1	0 of 1	0 of 1	0 of 1	West Coast	1
2100 with Threat Management	0 of 1	5.0.0 (2013-11-14)	3 of 1	0 of 1	0 of 1	0 of 1	Cradle Inc.	1
M8R1200B	0 of 1	4.4.7 (2013-10-07)	2 of 1	0 of 1	0 of 1	0 of 1	Cradle Inc.	1
westcoast2100	0 of 0	4.4.0 (2013-08-12)	2 of 0	0 of 0	0 of 0	0 of 0	Cradle Inc.	0

Upgrade firmware for devices & groups

- + Zero-touch configuration at installation for rapid deployment
- + Deliver services and applications for increased security and capabilities
- + Integrate easily with enterprise applications using Cradlepoint's Open API
- + Cloud-managed instant scalability with no capital infrastructure costs



Security Applications

Deploy Instantly to protect your network



ZSCALER INTERNET SECURITY

Configured in minutes, best-in-breed Zscaler Internet Security protects your organization from web-based threats.



CP SECURE THREAT MANAGEMENT

A comprehensive intrusion prevention and detection system (IPS/IDS) that is powered by Trend Micro's industry leading DPI engine.

LEARN MORE AT CRADLEPOINT.COM/ECM